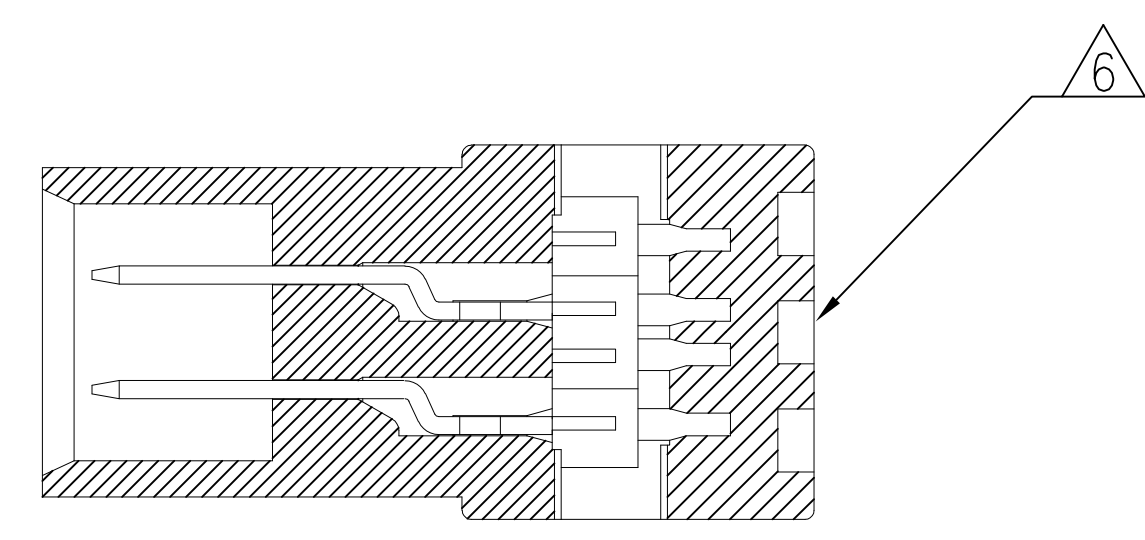
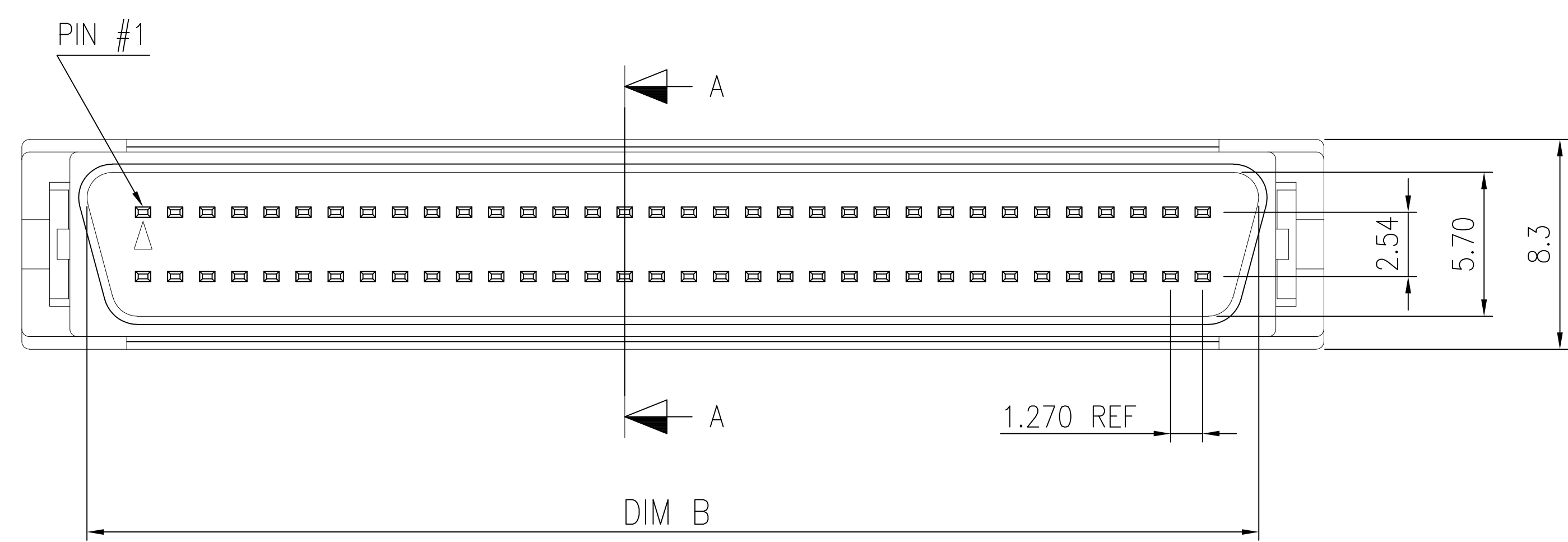
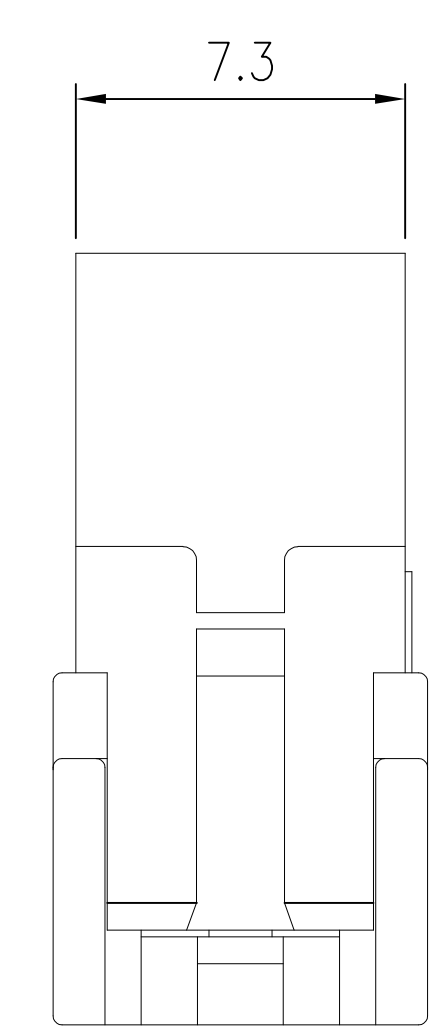
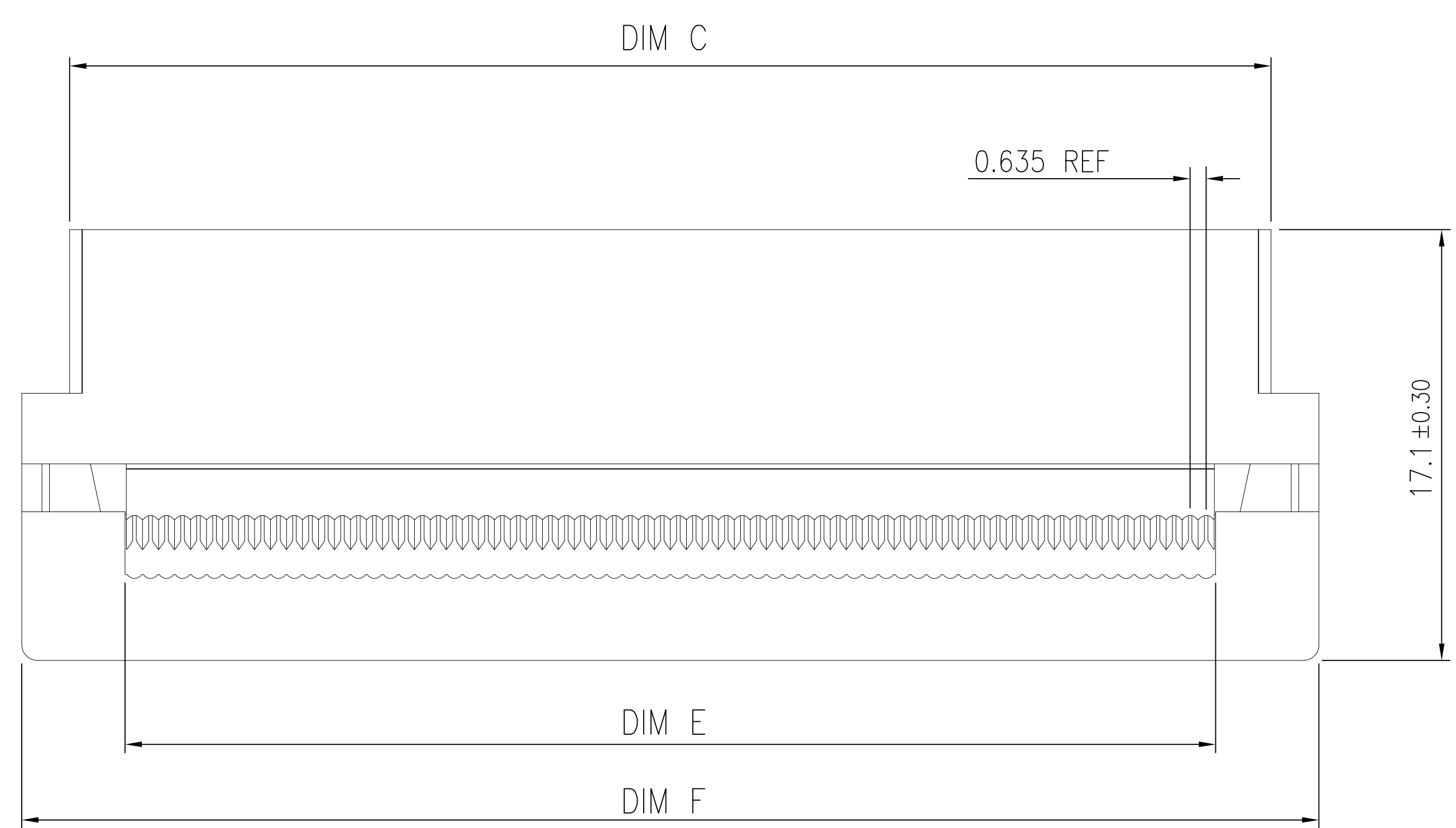


LOC	DIST	REVISIONS				
GP	00	REV	DESCRIPTION	DATE	BY	APPV
		A	REVISED PER ECO-09-026043	15JAN2010	CR	SB
		A1	REVISED PER ECO-10-002990	30JAN10	KK	HMR



SEC. A-A



- ① HOUSING: PBT, 30% GLASS REINFORCED, UL94V-0, COLOR BLACK.  
CONTACTS: PHOS. BRONZE.
- ② CONTACTS: GOLD PLATED (SEE TABLE) ON MATING END, 1.27µm [.000050in] MIN MATTE TIN ON TERMINATION AREA, ALL OVER 1.27µm [.000050in] MIN NICKEL ON ENTIRE CONTACT.
- ③ SPECIFICATIONS:  
CURRENT RATING: 1A.  
VOLTAGE RATING: 30V AC.  
INSULATION RESISTANCE: 1000 MILLIOHMS MIN. AT 500V DC.  
CONTACT RESISTANCE: 55 MILLIOHMS MAX.  
DIELECTRIC WITHSTANDING VOLTAGE: 250V AC FOR 1 MINUTE.  
CONTACT RETENTION FORCE: 600 gf MIN.  
TOTAL INSERTION FORCE: 4 Kgf MAX. (FORCE DEPENDENT ON MATING CONNECTOR)  
TOTAL WITHDRAWAL FORCE: 1.5 Kgf MAX. (FORCE DEPENDENT ON MATING CONNECTOR)  
WIRE COVER RETENTION FORCE: 6 Kgf MIN.  
OPERATION TEMPERATURE: -55°C TO 85°C.
- ④ FOR USE WITH 30 & 32 AWG FLAT RIBBON CABLE.  
SELECTION OF COMPATIBLE RIBBON CABLE AND APPLICATION TOOLING FOR USE WITH THIS PRODUCT IS THE RESPONSIBILITY OF THE USER.
- 5. SPECIFICATIONS SUBJECT TO CHANGE WITHOUT NOTICE.  
CONTACT TYCO ELECTRONICS FOR THE LATEST SPECIFICATIONS.
- ⑥ TYCO LOGO LOCATED ON THIS SURFACE.
- 7. PACKAGED IN TRAYS.

68 POSITION SHOWN

SUPERSEDED BY 5390377-7	51.5	43.30	47.7	46.35	0.03µm [.00001in]	68	-2-5390377-7
SUPERSEDED BY 5390377-7	51.5	43.30	47.7	46.35	0.38µm [.000015in]	68	-1-5390377-7
	51.5	43.30	47.7	46.35	0.76µm [.000030in]	68	5390377-7
	40.07	31.87	36.27	34.92	0.76µm [.000030in]	50	5390377-5
	DIM F	DIM E	DIM C	DIM B	CONTACT FINISH	NO OF POS	PART NUMBER

THIS DRAWING IS A CONTROLLED DOCUMENT.

DIMENSIONS: mm	TOLERANCES UNLESS OTHERWISE SPECIFIED:	0. PLC ± -	1. PLC ± 0.15	2. PLC ± 0.10	3. PLC ± -	4. PLC ANGLES ± -
----------------	--	------------	---------------	---------------	------------	-------------------

APPROVED: J. GERACE	DATE: 26JAN05	Tyco Electronics Corporation Harrisburg, Pa 17105-3608
CHK: S. SHUEY	DATE: 26JAN05	
APPROVED: M. WALMSLEY	DATE: 26JAN05	NAME: M. WALMSLEY
PRODUCT SPEC		PLUG ASSEMBLY, UNSHIELDED, 0.64[.025] CENTERLINE, AMPLIMITE 1.27[.050] SERIES
APPLICATION SPEC		SIZE: A1
WEIGHT		CAGE CODE: 00779
CUSTOMER DRAWING		DRAWING NO: 5390377

SCALE: 1:1 SHEET 1 OF 1 REV A1