

**Product number FA10336\_NIS83-MX-RS**

Family	Rose	FWHM	12 degrees
Type	Assembly	Efficiency	89 %
LED	MX-6	cd/lm	9.880
Color	White	Gerber File	Available
Diameter	21.6 + 21.6 mm		
Height	13.5 mm		
Style	Square		
Optic Material	PC		
Holder Material	-		
Fastening	["tape"]		
Status	Production ready		

**Product number CA10610\_NIS83-MX-2-RS**

Family	Rose	FWHM	12 degrees
Type	Assembly	Efficiency	-
LED	MX-6	cd/lm	-
Color	White	Gerber File	Available
Diameter	21.6 + 21.6 mm		
Height	13.5 mm		
Style	Square		
Optic Material	PMMA		
Holder Material	-		
Fastening	["tape"]		
Status	Production ready		

**Product number CA13621\_G2-NIS83-MX-2-RS**

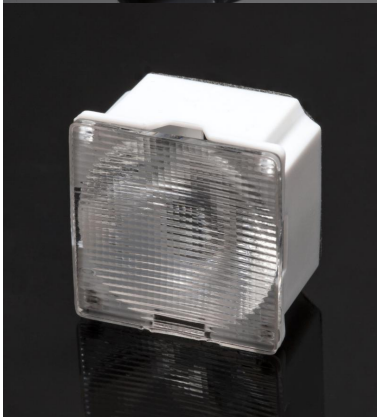
Family	Rose	FWHM	12 degrees
Type	Assembly	Efficiency	-
LED	MX-6	cd/lm	-
Color	White	Gerber File	Available
Diameter	21.6*21.6 mm		
Height	13.5 mm		
Style	Square		
Optic Material	PMMA		
Holder Material	-		
Fastening	["tape"]		
Status	Production ready		

**Product number FA10337\_NIS83-MX-SS**

Family	Rose	FWHM	16 degrees
Type	Assembly	Efficiency	88 %
LED	MX-6	cd/lm	6.460
Color	White	Gerber File	Available
Diameter	21.6 + 21.6 mm		
Height	13.5 mm		
Style	Square		
Optic Material	PC		
Holder Material	-		
Fastening	["tape"]		
Status	Production ready		

**Product number FA10338\_NIS83-MX-D**

Family	Rose	FWHM	16 degrees
Type	Assembly	Efficiency	87 %
LED	MX-6	cd/lm	5.500
Color	White	Gerber File	Available
Diameter	21.6 + 21.6 mm		
Height	13.5 mm		
Style	Square		
Optic Material	PC		
Holder Material	-		
Fastening	["tape"]		
Status	Production ready		

**Product number CA13624\_G2-NIS83-MX-2-O-90**

Family	Rose	FWHM	16+38 degrees
Type	Assembly	Efficiency	87 %
LED	MX-6	cd/lm	3.690
Color	White	Gerber File	Available
Diameter	21.6*21.6 mm		
Height	13.5 mm		
Style	Square		
Optic Material	PMMA		
Holder Material	-		
Fastening	["tape"]		
Status	Production ready		

**Product number CA10608\_NIS83-MX-2-D**

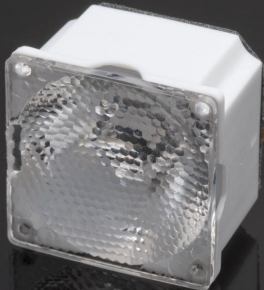
Family	Rose	FWHM	17 degrees
Type	Assembly	Efficiency	-
LED	MX-6	cd/lm	-
Color	White	Gerber File	Available
Diameter	21.6 + 21.6 mm		
Height	13.5 mm		
Style	Square		
Optic Material	PMMA		
Holder Material	-		
Fastening	["tape"]		
Status	Production ready		

**Product number CA10609\_NIS83-MX-2-SS**

Family	Rose	FWHM	17 degrees
Type	Assembly	Efficiency	-
LED	MX-6	cd/lm	-
Color	White	Gerber File	Available
Diameter	21.6 + 21.6 mm		
Height	13.5 mm		
Style	Square		
Optic Material	PMMA		
Holder Material	-		
Fastening	["tape"]		
Status	Production ready		

**Product number CA13619\_G2-NIS83-MX-2-D**

Family	Rose	FWHM	17 degrees
Type	Assembly	Efficiency	-
LED	MX-6	cd/lm	-
Color	White	Gerber File	Available
Diameter	21.6*21.6 mm		
Height	13.5 mm		
Style	Square		
Optic Material	PMMA		
Holder Material	-		
Fastening	["tape"]		
Status	Production ready		

**Product number CA13620\_G2-NIS83-MX-2-SS**

Family	Rose	FWHM	17 degrees
Type	Assembly	Efficiency	-
LED	MX-6	cd/lm	-
Color	White	Gerber File	Available
Diameter	21.6*21.6 mm		
Height	13.5 mm		
Style	Square		
Optic Material	PMMA		
Holder Material	-		
Fastening	["tape"]		
Status	Production ready		

**Product number CA11839\_NIS83-MX-2-M**

Family	Rose	FWHM	28 degrees
Type	Assembly	Efficiency	93 %
LED	MX-6	cd/lm	3.200
Color	White	Gerber File	Available
Diameter	21.6 + 21.6 mm		
Height	13.5 mm		
Style	Square		
Optic Material	PMMA		
Holder Material	-		
Fastening	["tape"]		
Status	Production ready		

**Product number CA13623\_G2-NIS83-MX-2-M**

Family	Rose	FWHM	28 degrees
Type	Assembly	Efficiency	93 %
LED	MX-6	cd/lm	3.200
Color	White	Gerber File	Available
Diameter	21.6*21.6 mm		
Height	13.5 mm		
Style	Square		
Optic Material	PMMA		
Holder Material	-		
Fastening	["tape"]		
Status	Production ready		

**Product number FA10339\_NIS83-MX-M**

Family	Rose	FWHM	30 degrees
Type	Assembly	Efficiency	86 %
LED	MX-6	cd/lm	2.300
Color	White	Gerber File	Available
Diameter	21.6 + 21.6 mm		
Height	13.5 mm		
Style	Square		
Optic Material	PC		
Holder Material	-		
Fastening	["tape"]		
Status	Production ready		

**Product number FA10344\_NIS83-MX-W**

Family	Rose	FWHM	36 degrees
Type	Assembly	Efficiency	84 %
LED	MX-6	cd/lm	-
Color	White	Gerber File	Available
Diameter	21.6 + 21.6 mm		
Height	13.5 mm		
Style	Square		
Optic Material	PC		
Holder Material	-		
Fastening	["tape"]		
Status	Production ready		

**Product number FA10340\_NIS83-MX-O**

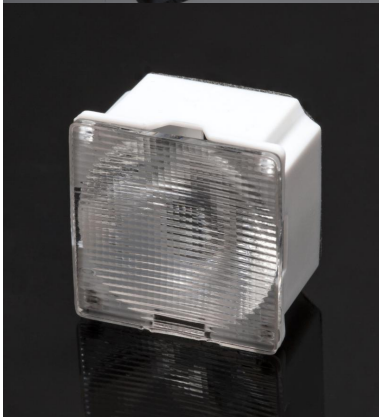
Family	Rose	FWHM	44+18 degrees
Type	Assembly	Efficiency	83 %
LED	MX-6	cd/lm	2.510
Color	White	Gerber File	Available
Diameter	21.6 + 21.6 mm		
Height	13.5 mm		
Style	Square		
Optic Material	PC		
Holder Material	-		
Fastening	["tape"]		
Status	Production ready		

**Product number CA10611\_NIS83-MX-2-O**

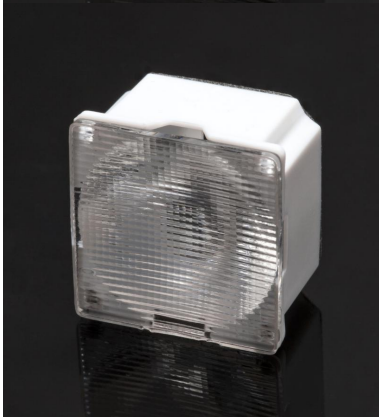
Family	Rose	FWHM	44+18 degrees
Type	Assembly	Efficiency	-
LED	MX-6	cd/lm	-
Color	White	Gerber File	Available
Diameter	21.6 + 21.6 mm		
Height	13.5 mm		
Style	Square		
Optic Material	PMMA		
Holder Material	-		
Fastening	["tape"]		
Status	Production ready		

**Product number FA11151\_NIS83-MX-O-90**

Family	Rose	FWHM	44+18 degrees
Type	Assembly	Efficiency	-
LED	MX-6	cd/lm	-
Color	White	Gerber File	Available
Diameter	21.6 + 21.6 mm		
Height	13.5 mm		
Style	Square		
Optic Material	PC		
Holder Material	-		
Fastening	["tape"]		
Status	Production ready		

**Product number CA13622\_G2-NIS83-MX-2-O**

Family	Rose	FWHM	44+18 degrees
Type	Assembly	Efficiency	-
LED	MX-6	cd/lm	-
Color	White	Gerber File	Available
Diameter	21.6*21.6 mm		
Height	13.5 mm		
Style	Square		
Optic Material	PMMA		
Holder Material	-		
Fastening	["tape"]		
Status	Production ready		

**Product number FCA13625\_G2-NIS83-MX-O-90**

Family	Rose	FWHM	44+18 degrees
Type	Assembly	Efficiency	-
LED	MX-6	cd/lm	-
Color	White	Gerber File	Available
Diameter	21.6 + 21.6 mm		
Height	13.5 mm		
Style	Square		
Optic Material	PC		
Holder Material	-		
Fastening	["tape"]		
Status	Production ready		

**Product number FA10903\_NIS83-MX-WW**

Family	Rose	FWHM	56 degrees
Type	Assembly	Efficiency	84 %
LED	MX-6	cd/lm	1.150
Color	White	Gerber File	Available
Diameter	21.6 + 21.6 mm		
Height	13.5 mm		
Style	Square		
Optic Material	PC		
Holder Material	-		
Fastening	["tape"]		
Status	Production ready		



## PRODUCT DATASHEET

### Rose series

last update 27/2/2013

**NOTE: The typical divergence will be changed by different color, chip size and chip position tolerance. The typical total divergence is the full angle measured where the luminous intensity is half of the peak value.**



## PRODUCT DATASHEET

### Rose series

last update 27/2/2013

#### GENERAL INFORMATION

- Product series especially designed & optimized for MX-6 series of LEDs.
- Special care taken to make light distribution as uniform as possible.
- Lens material optical grade PMMA with high UV and temperature resistance. Allows use of high current and temperature conditions.

Please find more information about used material from below:

[http://ledil.fi/sites/default/files/Documents/Technical/Material/PMMA%20N%20UL94\\_Yellow%20Card.pdf](http://ledil.fi/sites/default/files/Documents/Technical/Material/PMMA%20N%20UL94_Yellow%20Card.pdf)

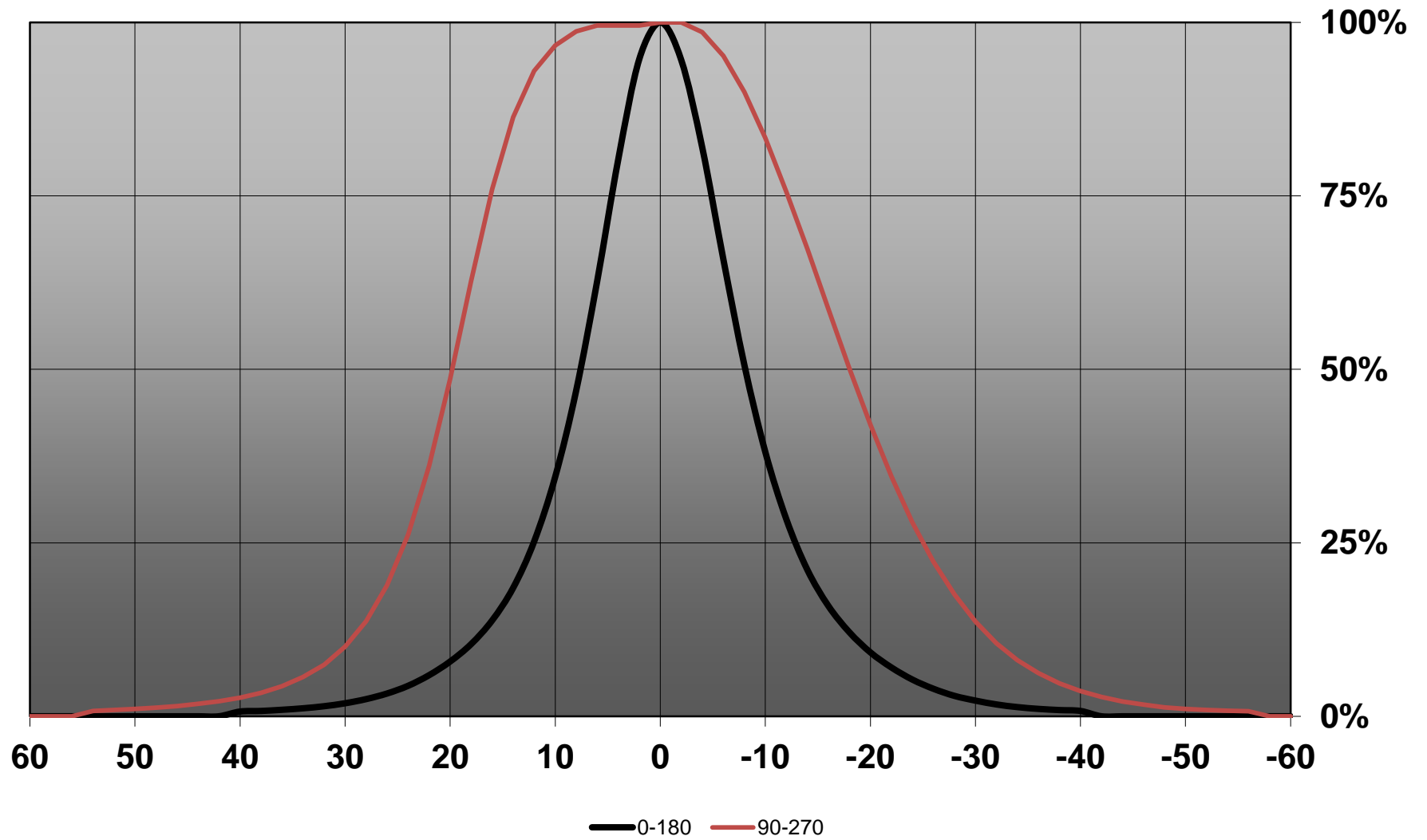
<http://ledil.fi/sites/default/files/Documents/Technical/Material/PMMA%20N%20PLEXIGLAS-Datasheet.pdf>

- Lens material optical grade PC with high UV and temperature resistance (120 degrees of Celcius / 248 degrees of Fahrenheit). Allows use of high current and temperature conditions.

Please find more information about used materials from below:

[http://ledil.fi/sites/default/files/Documents/Technical/Material/PC%20Makrolon%202400\\_2407\\_2456\\_2458-UL.pdf](http://ledil.fi/sites/default/files/Documents/Technical/Material/PC%20Makrolon%202400_2407_2456_2458-UL.pdf)

# Relative intensity of CA13624\_G2-NIS83-MX-2-O-90\_(MX-6)





D

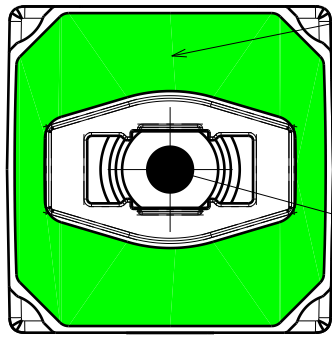
C

B

A

4

4

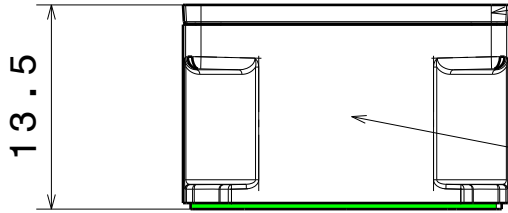


Tape 0.4mm

Led position

3

3



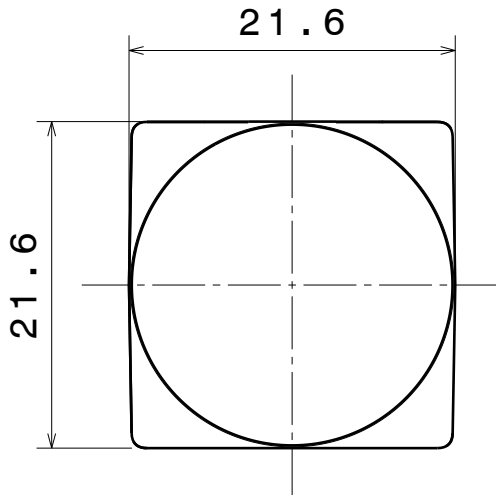
13.5

Lens

Holder

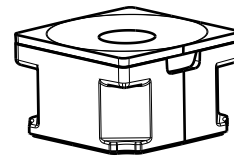
2

2



21.6

21.6



Isometric view 1:1

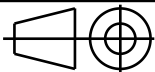
1

1

Tolerances if not otherwise shown  
 According to DIN ISO 2768-1  
 Linear measures:  
 Up to 30mm class M, otherwise class C.  
 According to DIN ISO 2768-2  
 Form and position: class L

**LEDiL** LediL Oy  
 Salorankatu 10  
 FIN 24240 SALO  
 Finland

THIRD ANGLE PROJECTION:



DRAWING TITLE

Datasheet NIS83-MX

This drawing is the property  
 of LEDiL Oy. It may not be  
 reproduced, copied or  
 communicated without a written  
 agreement with LEDiL Oy."

SIZE PART NUMBER

A4

-

SCALE 2:1 WEIGHT

-

SHEET 1/1

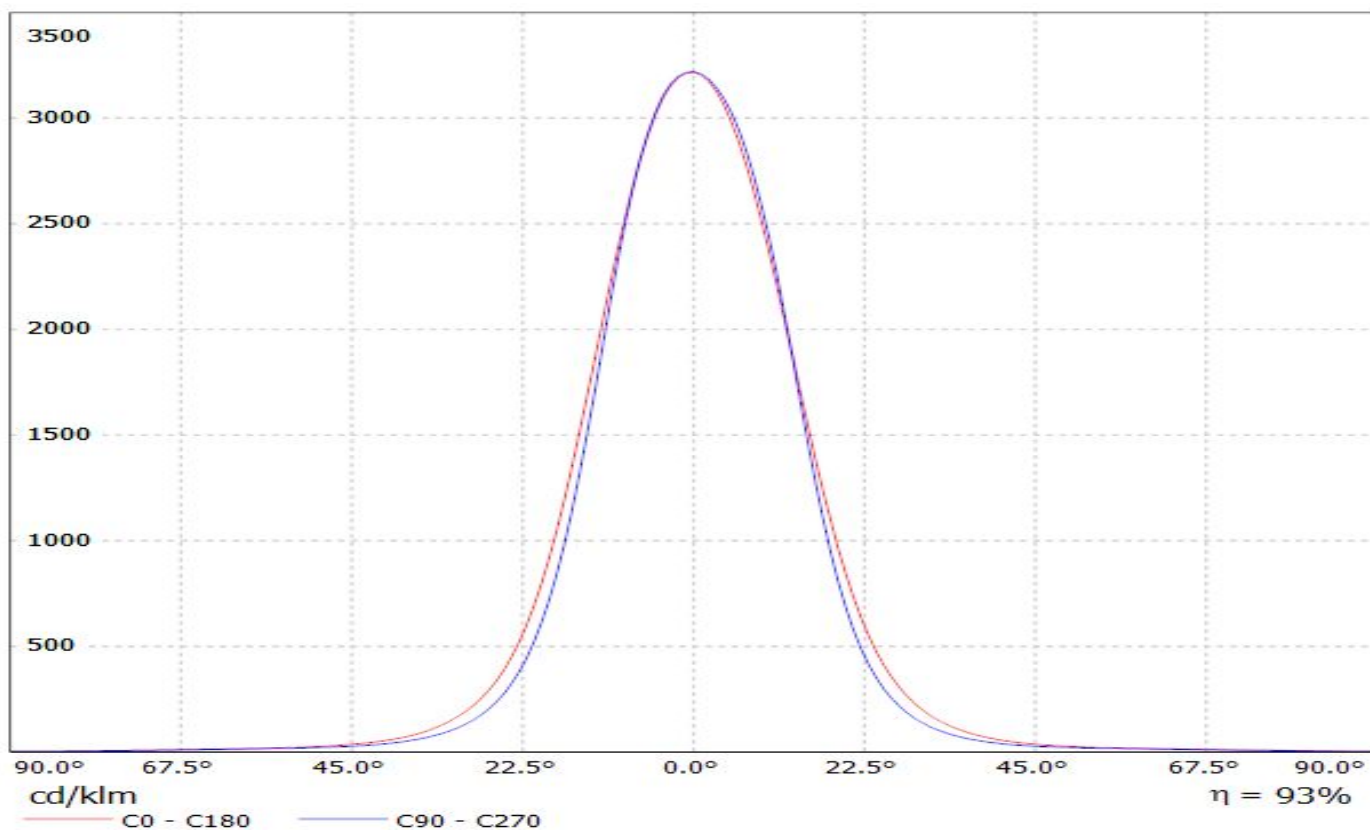
D

A

# LEDiL Oy CA11839\_NIS83-MX-2-M\_(MX-6) Eff.92.7% / LDC (Linear)

Luminaire: LEDiL Oy CA11839\_NIS83-MX-2-M\_(MX-6) Eff.92.7%

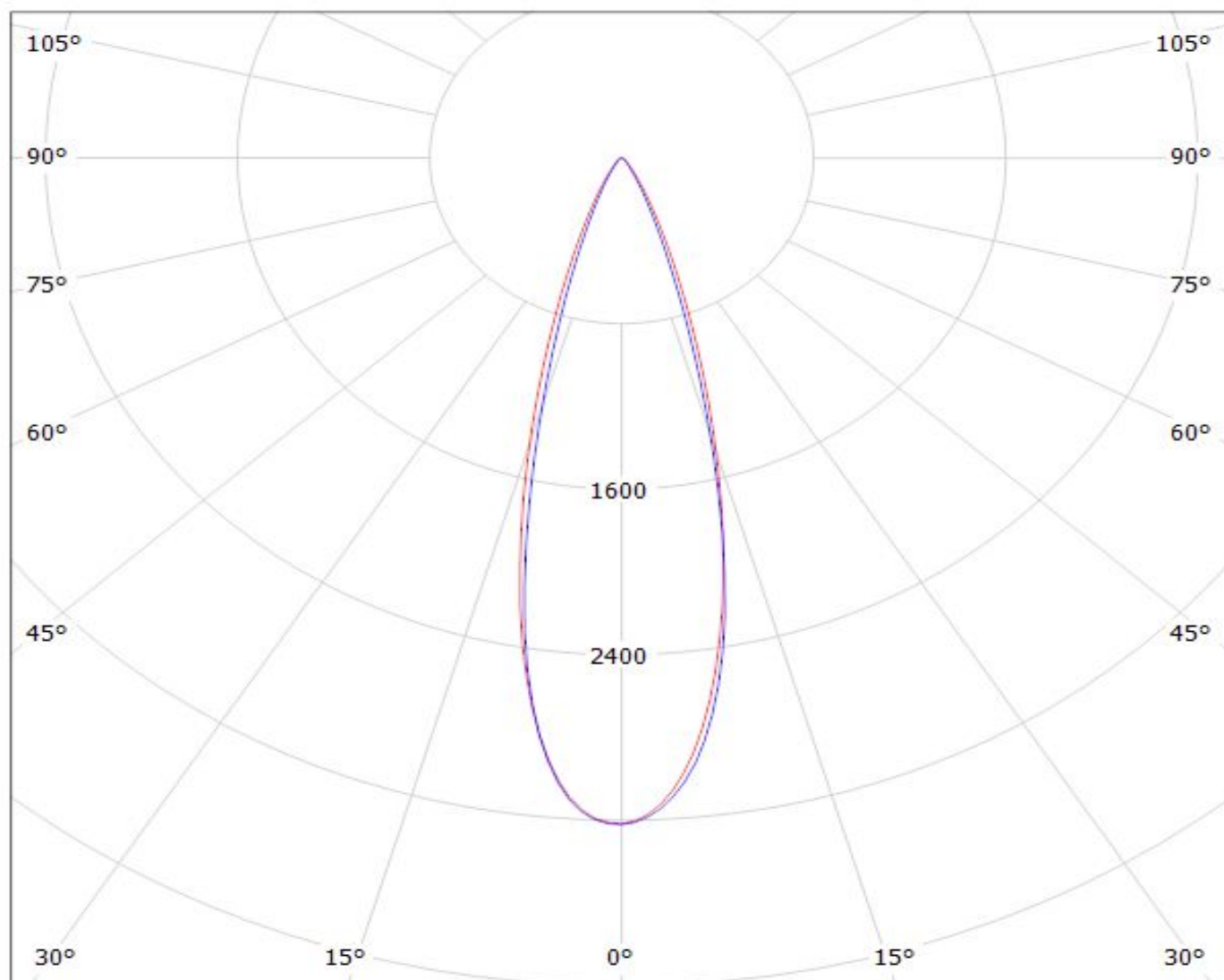
Lamps: 1 x CREE MX-6 (66lm@250mA)



# LEDiL Oy CA11839\_NIS83-MX-2-M\_(MX-6) Eff.92.7% / LDC (Polar)

Luminaire: LEDiL Oy CA11839\_NIS83-MX-2-M\_(MX-6) Eff.92.7%

Lamps: 1 x CREE MX-6 (66lm@250mA)



cd/klm

— C0 - C180

— C90 - C270

$\eta = 93\%$